
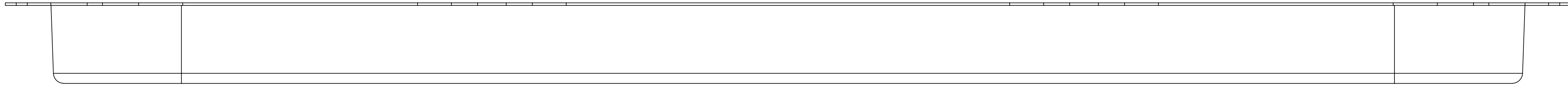
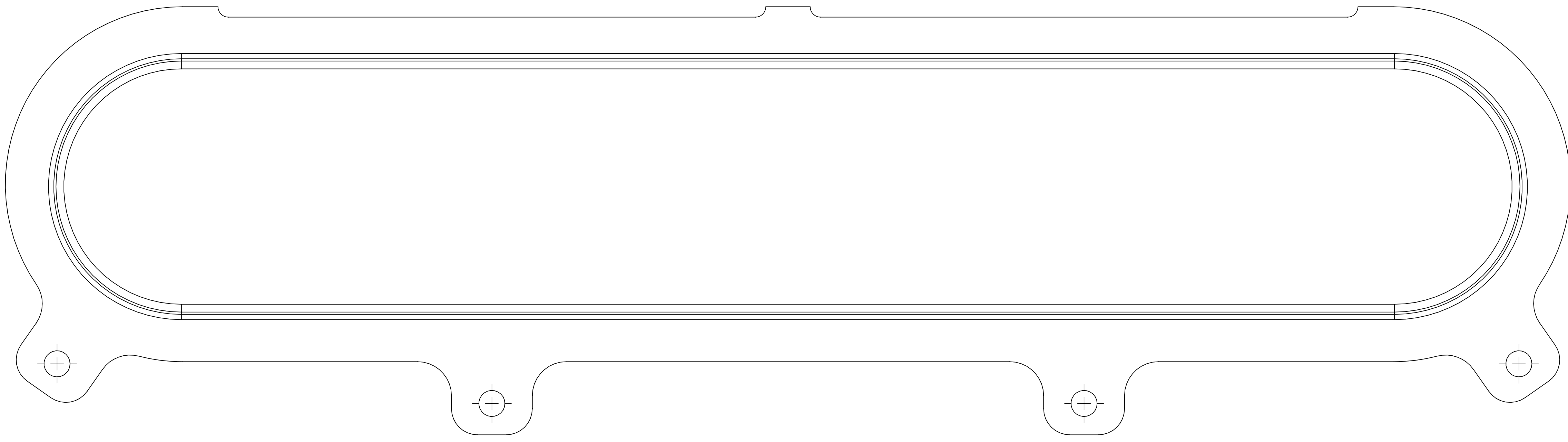
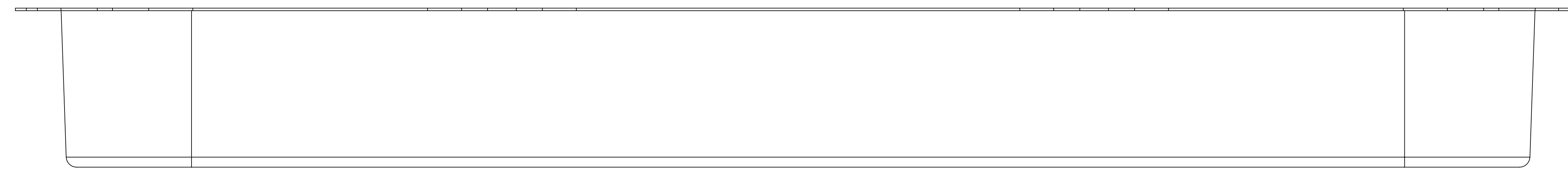
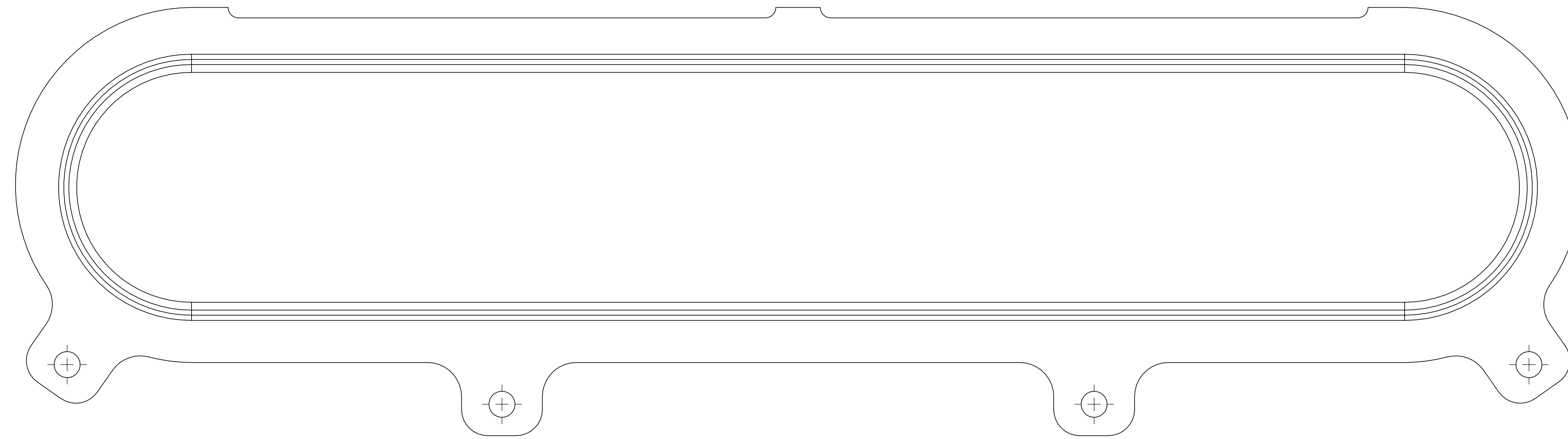


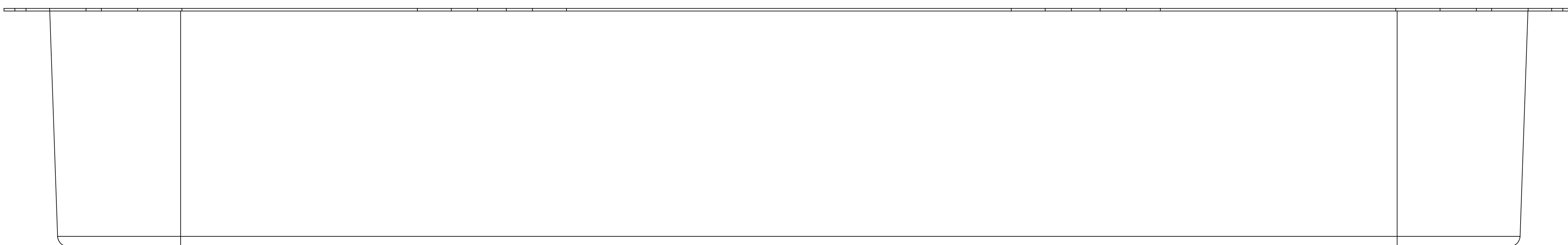
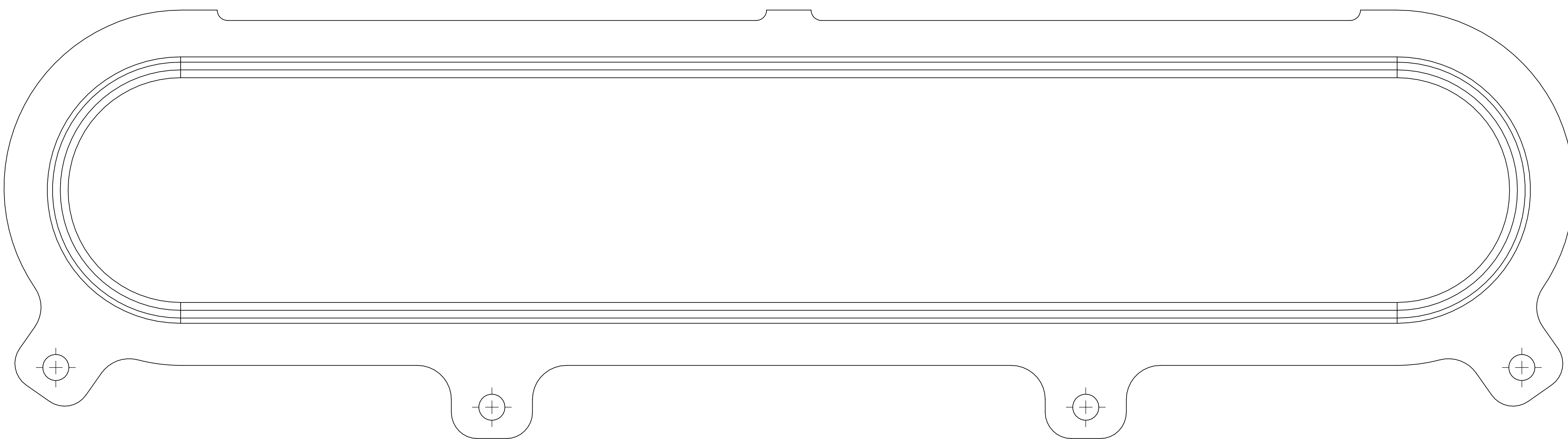
F	ISS: DESCRIPTION:			INITIALS:	E.C.N. NO:	DATE:	ALL DIMENSIONS IN MILLIMETERS			REMOVE ALL BURRS AND SHARP EDGES UNLESS OTHERWISE STATED		<div>Reverie Ltd Unit 2 Chandlers Row Colchester Essex CO1 2HG 01206 866663 www.reverie.ltd.uk</div>	DRAWN: JC	APP:	PART NO(S).: R01SE0568, R01SE0569, R01SE0570, R01SE0571			F
	1	Original issue		JC		08/09/2020	TOLERANCES (AT 20°C) UNLESS OTHERWISE STATED			HOLES TO BS4500 1985.			DATE: 08/09/2020		TITLE: ZOLDER MACAU 6 CYL FLAT, 30, 60, 90mm JC100 BACK PLATE			
													FINISH: SEE DRAWING		CUSTOMER: N/A			
													SCALE: DO NOT SCALE		MATERIAL: C/FIBRE			
													WEIGHT: -		INSPECTION GRADE: A-1PART QUALITY: B			
															DRG. NO.: SEE PART NO.S			



**R01SE0569**



**R01SE0570**



**R01SE0571**

**1:1 100% SCALE**